

# Mimosa NearPoint eDiscovery Option

## Powerful Search, Retrieval, and Management of Email and File System Data for Early Case Assessment, Litigation Support, and Internal Investigations

Every organization needs to produce and preserve electronically stored information (ESI) for legal proceedings and internal investigations. Government inquiries, criminal and civil proceedings, and financial audits are just a few of the various circumstances that can force a costly and time-consuming search of electronic information, including email and office files. In addition, organizations rely on ESI as a source of valuable information when performing internal investigations involving HR, intellectual property, and other important matters.

The Mimosa NearPoint™ eDiscovery Option is a robust yet easy-to-use email and file system search and discovery application that can be used from an auditor's or legal counsel's desktop. Using the eDiscovery Option, auditors define new discovery searches by selecting target Microsoft® Exchange mailboxes and/or file system servers and by defining search criteria, including owner, version, data range, content, file attributes or combination. Full-text search of the entire email including attachments as well as file system files is supported. For Exchange data, the NearPoint Continuous Application Shadowing™ function provides full message fidelity at capture, so powerful search queries can be created to find responsive email messages, calendar entries, contacts, notes, and task lists. eDiscovery Option search results can be viewed, tagged and placed on litigation hold within the eDiscovery Option or exported via PST for Exchange data and native file format for file system data.

### Key Features

- Provides comprehensive discovery of all email and file system assets, saving time and money over traditional discovery solutions
- Protects email and file system assets during litigation with object-level retention holds, reducing the risk of penalties and fines for spoliation
- Provides access to complete mailbox contents, including all email and recipients (To, From, Cc, Bcc) and all message items (email, calendars, contacts, etc.)
- Enables you to reconstruct complex events and understand user behavior for early case assessment and investigations
- Offers efficient collaboration capabilities so you can search, share, hold, review, and tag results for export

### Comprehensive eDiscovery

The Mimosa NearPoint archival architecture combines the most "discovered" record types into a fully indexed and single-instanced archive, enabling a comprehensive discovery search from a single user interface.

Only the NearPoint archive captures the complete contents of the Exchange mailbox, including email, calendars, contacts, task lists, and so on along with all file system contents.

With NearPoint and the eDiscovery Option, teams can work together efficiently to determine early case assessment, respond to a discovery request, or complete an internal audit. Search criteria can be saved and shared among users to ensure consistent and accurate results for frequently used search patterns and to show completeness of response to the court.

Email as well as file system data and office files can be placed on retention hold to prevent them from being deleted, and then shared with other auditors or legal staff to facilitate a review workflow. Auditors can easily view a listing of all auditors with whom they have shared an object. Assigned reviewers can quickly browse through messages and files, and tag items to aid subsequent searches and reduce unnecessary duplication of effort when cases overlap. On completion, results sets can be exported in PST format for emails or native file formats for file system data suitable for ingestion into case management applications, for external counsel review or court-ready production.

Archiving

Storage Management

Recovery



### CUSTOMER SPOTLIGHT

*"The demand to search email records for legal discovery is growing exponentially. NearPoint eDiscovery enables customers to manage their email discovery needs in-house and provides powerful search tools to discover and review thousands of email messages without the burden of searching backup tapes."*

— **Mark Diamond**  
President and CEO,  
Contoural, Inc.



| KEY FEATURES  | BENEFITS  |
|---|---|
| Comprehensive discovery of both Exchange and file system data | Perform searches, tag reviewed objects, and place litigation holds on the most requested data types in discovery—email and file system data   |
| Complete email message history                                | The eDiscovery Option provides a total view of email history, allowing for the reconstruction of complex events and user behavior for litigation support and investigations   |
| Conversation thread ID  | Follow entire email conversations more easily and trace all recipients (To, From, Cc, Bcc)  |
| Data exclusions   | Designating data types to be excluded in the search enables more targeted and faster results sets to be generated   |
| Workgroup collaboration                                       | Discovery teams can efficiently work together using the eDiscovery workflow features to search, hold, review, and tag results for export  |
| Object-level retention holds                                  | Legal teams can quickly create, manage, change, share, search, and remove retention holds on data stored in the NearPoint archive   |
| Multilevel search   | Reduce your workload by using the Search In feature to quickly narrow down search results to just the data you need   |
| Secure access   | eDiscovery Roles allow you to limit the data that auditors are allowed to access based on a specific set of mailboxes, file system servers, or Active Directory Groups  |
| PST export in flat format or folder hierarchy                 | Save email system discovery results in PST format, which are given to internal or external parties in the format that matches the destination requirements  |
| Integration with Microsoft Active Directory                   | NearPoint takes advantage of Active Directory in managing archive retention policies, applying access and retention policies to custodians, and applying litigation holds based on department or other Active Directory relationships |
| Office file versioning  | Assemble complete version histories of discovered ESI to show changes over time for litigation support  |
| Import Custodian Collector Option data sets                   | Collector Option can be imported into the NearPoint archive and reviewed, tagged and placed on litigation hold along with email and file system data using the eDiscovery option  |

**DESKTOP REQUIREMENTS**

- Microsoft Windows XP SP2
- Microsoft Outlook 2003 SP1

**SERVER REQUIREMENTS**

- Windows Server 2003 R1, R2
- SQL Server 2000 and 2005 SP1
- Microsoft .NET FrameWork 3.5

**ABOUT MIMOSA SYSTEMS**

Mimosa Systems, Inc. delivers next-generation content archiving solutions for information immediacy, discovery, and continuity. Mimosa NearPoint is the industry's most comprehensive unstructured information management software solution for email, files, and instant messages, enabling archiving, eDiscovery, storage management, and recovery in a unified solution.

**MIMOSA SYSTEMS HEADQUARTERS**  
 3200 Coronado Drive  
 Santa Clara, CA 95054  
 T 408-970-9070  
 F 408-970-9041  
 Email: info@mimosasystems.com

**WORLDWIDE OFFICES**  
 United Kingdom +44 (0) 118 963 7860  
 Germany +49 89 904 7551-0  
 India +91 20 4048596  
 www.mimosasystems.com



**Reduced Discovery Cost and Risk**

The Mimosa NearPoint eDiscovery Option lowers legal discovery total cost and reduces the overall risk associated with litigation. By eliminating the need to restore backups in order to search Exchange or file system data, the NearPoint eDiscovery Option reduces the burden on IT staff. The easy-to-use search tools

and collaboration features of eDiscovery will enhance the speed and efficiency of your legal and audit personnel. And most important, you can be assured that the ability of eDiscovery to produce the highest levels of ESI fidelity will provide your organization with the most accurate picture in any discovery situation.

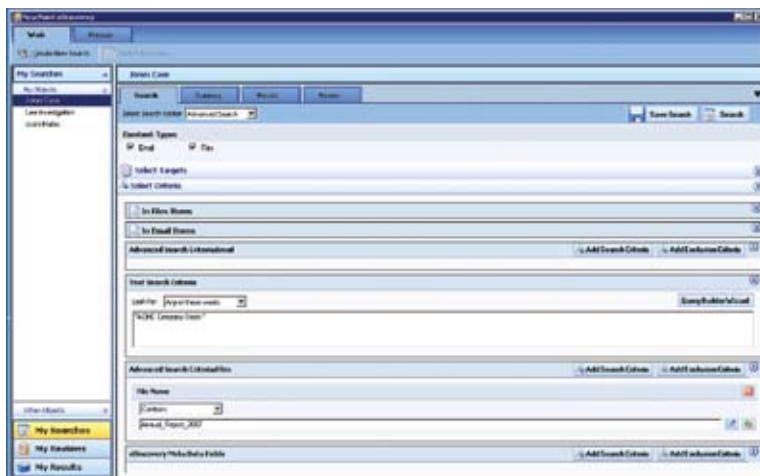


Figure 1. NearPoint eDiscovery Workspace